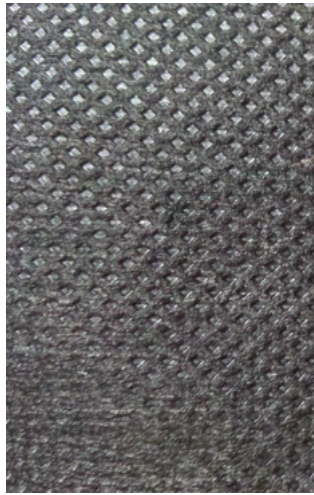




**Weed Barrier**

- Wildcat weed barrier is a non-woven polypropylene fabric.
- This “UV” protected fabric allows air, water and nutrients to reach the plants roots while keeping the sunlight out, which prevents weed growth.

**Suitable for** shaded areas and less permanent landscaping installations.



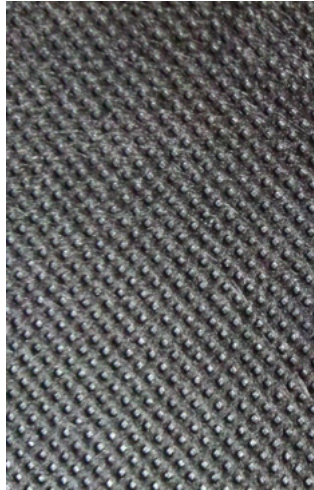
Property	Test Method	Unit	Minimum Average
Material			Polypropylene
Color			Black
Weight	ASTM D 5261	OZ/SY (GSM)	1.5 (50)
Grab Tensile	ASTM D 4632	LBS	MD 31 XMD 51
Grab Elongation	ASTM D 4632	%	MD 124 XMD 94
Trapezoid Tear	ASTM D 4533	LBS	MD 9 XMD 17
CBR Puncture	ASTM D 6241	LBS	65
Thickness	ASTM D 5199	MILS	11
Water Flow	ASMT D 4491	GAL/MIN/SF	26



**Weed Barrier+**

- Wildcat Pro. Series + is a heavier non-woven polypropylene fabric.
- This “UV” protected fabric allows air, water and nutrients to reach the plans roots while keeping the sunlight out, which prevents weed growth.
- Wildcat Pro. Series + weed barrier is suitable for more permanent landscaping installations.

**Suitable for** direct sunlight areas and more permanent landscaping installations.



Property	Test Method	Unit	Minimum Average
Weight	ASTM D 5261	OZ/SY	3
Grab Tensile	ASTM D 4632	LBS	MD 46 XMD 74
Grab Elongation	ASTM D 4632	%	MD 116 XMD 77
Trapezoid Tear	ASTM D 4533	LBS	MD 17 XMD 34
CBR Puncture	ASTM D 6241	LBS	95
Thickness	ASTM D 5199	MILS	18
Water Flow	ASTM D 4491	GAL/MIN/SF	51



**Hardscape Fabric**

- This product does not tear, fray, or puncture easily making it ideal for jagged rock.
- Known for it’s strength, versatility, and easy installation.
- Spunbound fabrics keep the weeds down while allowing air, water and nutrients to pass through, yet strong enough for jagged rock.
- High puncture resistance.

**Suitable for** Behind Retaining Walls, Under Patios, Sidewalks, under Pebbles and edged stone.



Property	Test Method	Unit	Minimum Average Roll Value
Material			Polypropylene
Color			Black
Construction Weave			3’x50’, 4’x100’, 4’x300’, 6’x300’
Weight	ASTM D 5261	OZ/SY	4.1 Scrim 2.6 Cap 1.5
Grab Tensile Strength	ASTM D 4632	LBS	Warp 80 Weft 50
Grab Elongation	ASTM D 4632	%	Warp 12 Weft 12
Trapezoid Tear	ASTM D 4533	LBS	Warp 40 Weft 20
Puncture	ASTM D 6241	LBS	325
Water Permeability	ASTM D 4491	GAL/MIN/SF	8
Ultraviolet Exposure	ASTM D 4355	% Strength Retained	>70% after 2500 Hrs Carbon Arc Exposure