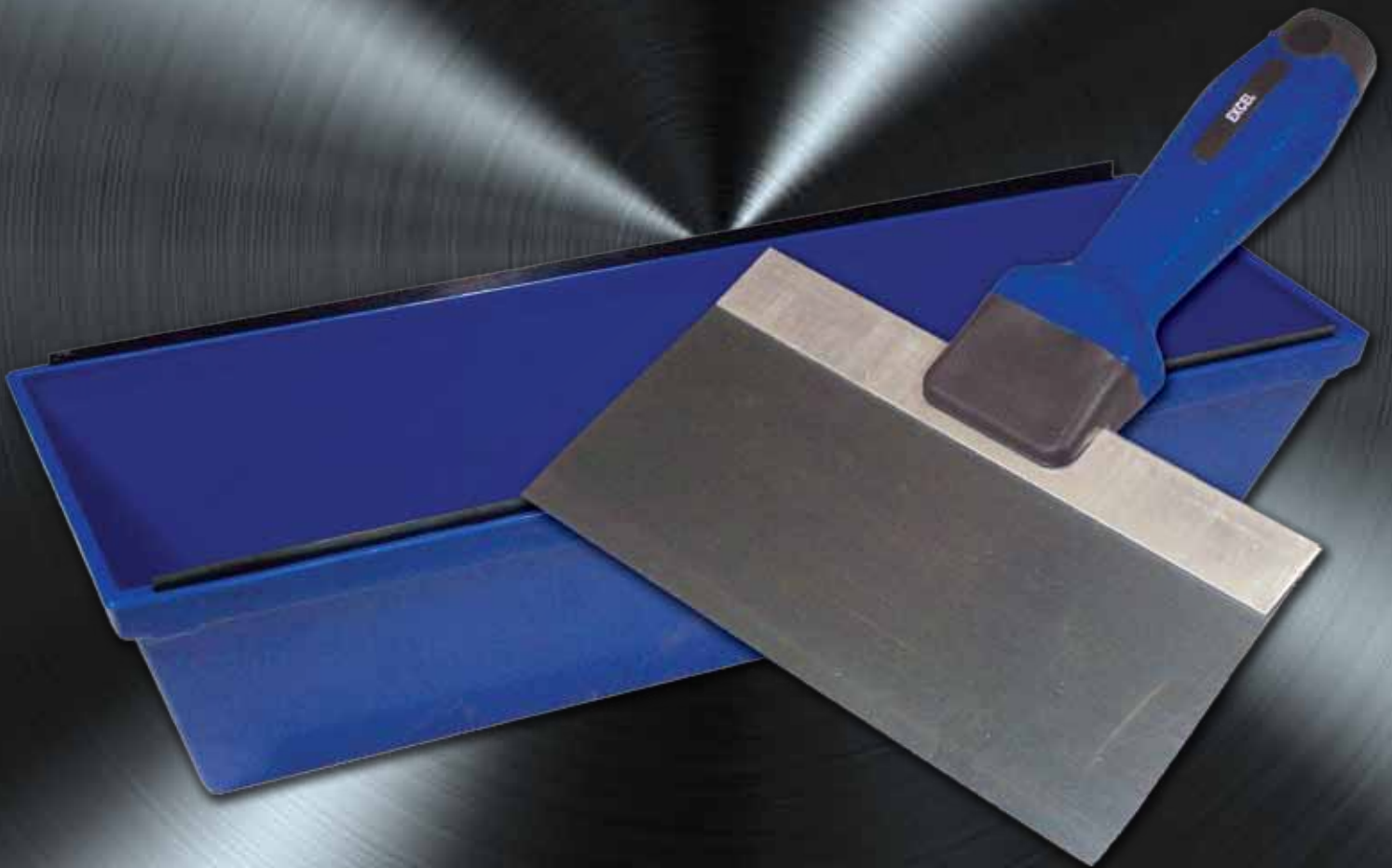


Drywall/ Plastering





Putty Knife

5-In-1 Painter Tool

Putty Knife

SKU	Description
626202	1 1/2" Putty Knife
626204	2" Putty Knife
626206	3" Putty Knife
626208	4" Putty Knife
626212	6" Putty Knife
626282	5-in-1 Painter Tool

- Flex steel blade
- Hammer end cap



Drywall Tape Knife

SKU	Description
626004	8" Drywall Tape Knife
626008	10" Drywall Tape Knife
626010	12" Drywall Tape Knife

- Blue steel blade
- Comfort cushion grip



Inside Corner Tool

SKU	Description
626102	Inside Corner Tool

- Stainless Steel
- Comfort Cushion Grip
- Riveted Handle



Outside Corner Tool

SKU	Description
626122	Outside Corner Tool

- Stainless steel
- Comfort cushion grip
- Riveted handle



To order
1-800-325-6851
www.wswcorp.com

Drywall/Plastering

Mud Pans

SKU	Description
626302	12" Galvanized Mud Pan
626304	14" Galvanized Mud Pan
626312	12" Plastic Mud Pan

- Corrosion resistant galvanized steel
- Spot welded and water tight



"Fan Blade" Mixer

SKU	Description
674352	2 Wheel "Fan Blade" Mixer
674354	3 Wheel "Fan Blade" Mixer

- Ideal for drywall mud
- Plated steel to prevent corrosion
 - 3/8" Hex shaft
 - 5" Blade width



"Ribbon" Mixer

SKU	Description
674360	28" Ribbon Mixer
674362	36" Ribbon Mixer

- "Ribbon" Mixer Ideal for drywall mud or thinset
- All steel design for durability
 - 3/8" Hex shaft
 - Head measures 4" x 7"





Hand Sander

SKU	Description
626552	Hand Sander

- Cast aluminum
- Plastic handle
- Fits 4 $\frac{1}{4}$ " x 11 $\frac{1}{4}$ " sand paper



Drywall Tape

SKU	Description
020727	Drywall Tape – 500 Ft. Roll

- Drywall tape is used to cover the joints between drywall panels



Fiberglass Mesh Tape

SKU	Description
626714	Fiberglass Mesh Tape – 2" x 300 Ft. Roll

- Fiberglass tape is used to cover the joints between drywall panels
- Self adhesive – no pre mud required
- Stronger than paper tape



To order
1-800-325-6851
www.wswcorp.com

Drywall/Plastering

Midget Trowel

SKU	Description
620058	7 1/2" x 3" Midget Trowel

- High carbon steel
- Comfort cushion grip
- Shank is fused to blade for added strength



Stainless Trowel

SKU	Description
620652	12" x 5" Stainless Trowel
620654	13" x 5" Stainless Trowel
620656	14" x 5" Stainless Trowel

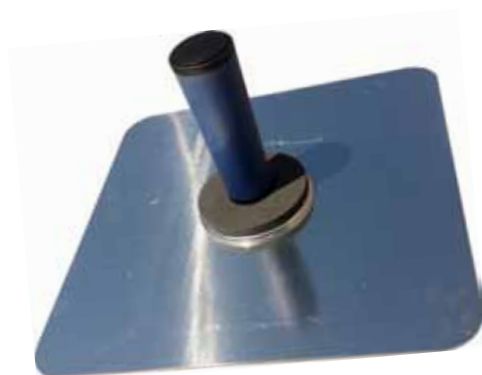
- Lightweight
- Comfort cushion grip
- Shank is fused to blade for added strength

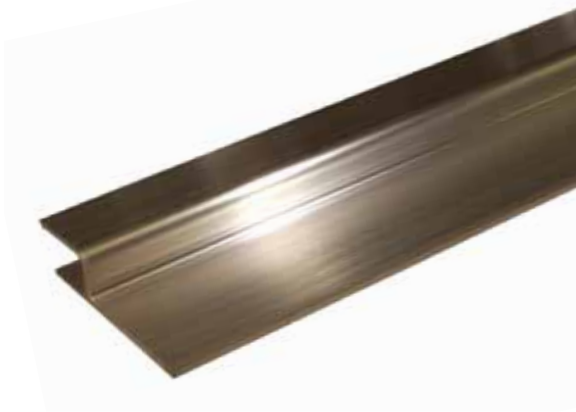


Hawk

SKU	Description
626354	13" x 13" Hawk

- Aluminum
- Comfort cushion grip
- Reinforced handle





Featheredge

SKU	Description
626372	4' Featheredge
626374	6' Featheredge
626376	8' Featheredge

- Lightweight magnesium
- Finger channel for control



Magnesium Darbies

SKU	Description
626950	42" Smooth Darbie
626952	42" Single Serrated Edge Darbie
626954	42" Double Serrated Edge Darbie

- Lightweight magnesium darbies
- Ergonomic wood handle



Scratcher Darbie

SKU	Description
626932	42" Scratcher Darbie

- Aluminum blade
- Teeth can be redressed for longer life
- Plastic handles



To order
1-800-325-6851
www.wswcorp.com

Drywall/Plastering

Plaster Scratcher Trowel

SKU	Description
626902	12" x 5" Plaster Scratcher Trowel
626906	16" x 5" Plaster Scratcher Trowel

- High carbon steel
- Ergonomic handle
- Tang is fused to the trowel



Handle Plaster Scratcher

SKU	Description
626922	Handle Plaster Scratcher

- Flexible blue steel blade
- Ergonomic handle
- Great for scratch coat



Hand Plaster Scratcher

SKU	Description
626928	Hand Plaster Scratcher

- Aluminum blade
- Wide plastic handle
- Great for scratch coat



Plaster Scarifier

SKU	Description
626942	12" Plaster Scarifier

- Blue steel blades
- Plastic handle





Red Rubber Float

Sku	Description
626970	4" x 12" Red Rubber Float

- Wood handle
- Dense all-natural red rubber



Green Foam Float

Sku	Description
626980	4" x 12" Green Foam Float
626982	5" x 12" Green Foam Float

- The standard stucco float
- Wood handle
- High quality green foam



Neoprene Float

Sku	Description
626990	4" x 12" Neoprene Float
626992	5" x 12" Neoprene Float

- For heavy texture applications
- Wood handle
- High quality neoprene

Angle Plane (Mortar Scraper)

SKU	Description
626938	Angle Plane (Mortar Scraper)

- Used for removing high spots on plaster
- High carbon steel
- Plastic handle



Drywall Jab Saw

SKU	Description
626754	Contractor Drywall Jab Saw

- 6-inch jab saw with a sharpened tip for puncturing drywall
- Thick, ergonomically designed grip resists slipping and adds comfort



Drywall Saw

SKU	Description
626782	Drywall Saw

- Aggressive tooth design for easy cutting
- Triple ground teeth cut on both push and pull strokes
- 15" Length



Drywall Hammers

SKU	Description
626804	14 oz. Drywall Hammer – Steel Handle

- Available with steel or wood handle
- Steel hammer is one piece drop forged



